



**State Opioid Response (SOR) 4 Grant  
Request for Application  
California Youth Opioid Response Project  
(YOR California)  
YOR 4**

**Application Responses Due  
Thursday, 4 p.m. PT  
March 13, 2025**



# Contents

<b>1. About the Grant</b>	<b>3</b>
<b>2. Purpose</b>	<b>4</b>
<b>3. YOR 4 Goals</b>	<b>4</b>
<b>4. Grant Requirements</b>	<b>5</b>
4.1 Eligible Service Types and Settings	5
4.2 Eligible Grant Recipients	5
4.3 Grant Monitoring and Participation in Training and Technical Assistance	6
4.4 Inclusion of Evidence-Based Practices and Community-Defined Evidence Practices	6
4.5 YOR California Service Model	6
<b>5. Data Reporting Requirements</b>	<b>7</b>
5.1 GPRA Data Requirements	7
<b>6. Expenditures</b>	<b>8</b>
<b>7. Sustainability Planning</b>	<b>9</b>
<b>8. Health Equity</b>	<b>9</b>
<b>9. Application Process, Rules, and Requirements</b>	<b>10</b>
IMPORTANT DATES	10
9.1 Online Application	10
9.2 Budget	11
9.3 Implementation Plan	11
9.4 Additional Required Documents	11
<b>10. Post-Award Contract Negotiation and Management</b>	<b>11</b>
<b>11. Applicant Scoring Criteria</b>	<b>12</b>
<b>12. YOR California Round 4 Application Worksheet</b>	<b>17</b>
<b>13. Attachment 1 — Budget Template</b>	<b>25</b>

This project will be supported by the California’s State Opioid Response (SOR) 4 grant program funded by the California Department of Health Care Services (DHCS). This grant was provided to DHCS by the U.S. Substance Abuse and Mental Health Services Administration (SAMHSA). The SOR 4 grant supports the DHCS Opioid Response Project, which aims to address the opioid and stimulant use disorder (StUD) crises by improving access to treatment, reducing unmet treatment needs, and reducing opioid- and stimulant-related overdose deaths through the provision of prevention, treatment, harm reduction, and recovery service activities.

DHCS has contracted with the California Institute for Behavioral Health Solutions (CIBHS), in collaboration with Advocates for Human Potential, Inc. (AHP), to administer YOR 4 California grant projects.

The SOR 4 program provides resources for evidence-based treatments, practices, and interventions for opioid use disorder (OUD) and StUD. SAMHSA requires that medications for the treatment of opioid use disorder (MOUD) be made available to those diagnosed with OUD. MOUD includes FDA-approved treatments such as methadone and buprenorphine products, including single-entity buprenorphine products, buprenorphine/naloxone tablets, films, buccal preparations, long-acting injectable buprenorphine products, and injectable extended-release naltrexone.

## **YOUTH OPIOID RESPONSE (YOR) 4 FUNDING OPPORTUNITY AT A GLANCE**

Funds are made available to increase access to quality services for youth, transition-age youth (TAY), and young adults (ages 16–25) with opioid and/or stimulant use disorders (OUD/StUD), and/or who are at risk of misusing illicit substances and counterfeit pharmaceuticals often mixed with fentanyl.

### **Grant Period**

May 1, 2025 – September 29, 2027

### **Applications Due**

March 13, 2025

## **1. About the Grant**

The California Youth Opioid Response (YOR California) project is seeking applicants for YOR 4 grant funding. Applicants must demonstrate their ability to successfully provide treatment services and/or expand access for youth, TAY, and young adults with OUD/StUD and/or those at risk of misusing illicit substances and counterfeit pharmaceuticals often mixed with fentanyl.

YOR California works in partnership with stakeholders throughout California to increase low-barrier access to FDA-approved MOUD, and support the full continuum of prevention, harm reduction, treatment, and recovery support services for youth, TAY, and young adults (ages 16–25) experiencing OUD and other concurrent substance use disorders (SUDs). YOR 4 will build on and expand work done in the first three project rounds and further focus on effective outreach, engagement, overdose prevention, harm reduction, and low-barrier access to MOUD treatment and comprehensive care for youth, TAY, and young adults (ages 16–25).

YOR California supports community, organization, and service collaboration, providing a path for access to direct services when other funds are not available. Programs must include

culturally responsive outreach strategies for reaching youth, TAY, and young adults (ages 16–25) in their communities. Programs must also include youth-friendly environments and pathways toward sustainable programming from outreach to recovery support.

There is no minimum award, and the maximum allowable funding is \$750,000 for the complete grant term. The average amount, based on past funding cycles, will be approximately \$400,000. The anticipated grant term is May 1, 2025, to September 29, 2027.

## **2. Purpose**

According to the California Department of Public Health, provisional data for year-end 2023 show that over 7,500 opioid overdose deaths occurred in California, with more than 90 percent of these cases related to fentanyl. Among these deaths, 570 involved individuals aged 15 to 24, and 94 percent of those fatalities also involved fentanyl. Illicitly manufactured fentanyl continues to drive the majority of deaths, but mortality rates due to cocaine and psychostimulants such as methamphetamine have also increased. Overdose deaths involving stimulants rose by 6 percent from 2022 to 2023. These deaths are likely linked to the co-use or mixing of cocaine or methamphetamine with fentanyl or heroin by illicit manufacturers. As in other areas, the COVID-19 pandemic years saw an exacerbation of health disparities in overdoses.

SAMHSA encourages grant recipients to address the diverse behavioral health needs of underserved communities as defined by Executive Order 13985. Recipients must also serve all individuals equitably and administer programs in compliance with federal civil rights laws that prohibit discrimination based on race, color, national origin, disability, age, religion, and sex (including gender identity, sexual orientation, and pregnancy).

## **3. YOR 4 Goals**

- Recruit organizations with optimal performance in medication intervention integration and outreach in culturally/geographically underserved areas.
- Integrate treatment and expand availability of medication treatment options in youth services within and outside the Drug Medi-Cal Organized Delivery System through requirement that nontreatment facility grantees integrate medication treatment into their mental health, recovery support, or community setting, or formalize a direct partnership with an access point to a medication provider.
- Support and enhance OUD/StUD youth services workforce education, recruitment, and retention by employing/empowering TAY and young adults (ages 16–25), peers, and persons with lived experience to strengthen outreach efforts, navigation, harm reduction, and education to communities, families, and youth.
- Expand the project's treatment focus to include youth at risk of or misusing all illicit substances and counterfeit pharmaceuticals often mixed with fentanyl.
- Continue overdose prevention and education efforts through the distribution of naloxone and fentanyl and xylazine test strips to patients, friends, and family members.
- Support the continuum of OUD/StUD prevention, harm reduction, treatment, and recovery support services through youth involvement and youth-created social media efforts.
- Expand low barrier\* access to treatment with a focus on high-risk youth, such as those negatively impacted by social determinants of health (SDOH), housing instability, justice system involvement, and foster care.

- OUD/StUD training and technical assistance (TTA) for systems of care and the expanded network (juvenile justice, mental health, social services, and foster care agencies) that serve unhoused youth, youth and transitional age youth (TAY) with behavioral health issues, and youth who experience SDOH.

*\* Low barrier care is a model for treatment that seeks to minimize the demands placed on clients and make services readily available and easily accessible. It also promotes a nonjudgmental, welcoming, and accepting environment. In this way, low barrier models of care meet people where they are, providing culturally responsive and trauma-informed care tailored to the unique circumstances and challenges that each person faces. For more information, see SAMHSA's [Low Barrier Models of Care for Substance Use Disorders](#).*

## 4. Grant Requirements

### 4.1 Eligible Service Types and Settings

Grantees will expand capacity, outreach, and access to the constellation of MOUD and other elements of the YOR California Service Model.\* YOR California is looking for applicants who can demonstrate their ability to increase access to and services for youth, TAY, and young adults with OUD/StUD, and/or who are at risk of misusing illicit substances and counterfeit pharmaceuticals often mixed with fentanyl.

Evidence-based practices (EBP) and community-defined evidence practices (CDEP) must be implemented with fidelity into grantee activities. \* Applicants should consider change management and sustainability strategies when designing and operating their proposed programs. YOR California provides funding for expanding outreach, improving access to youth services and collaborations, providing direct services when other funds are not available, and engaging in overdose prevention efforts among TAY and young adults (ages 16–25). Programs must include culturally responsive outreach strategies specific to TAY and young adults (ages 16–25) in their communities, strategies to create youth-friendly environments, and pathways toward sustainable programs, from outreach to recovery support.

Programs must provide active assistance to individuals with completion of health insurance applications and enrollment for eligible uninsured patients. Eligible individuals must be supported in obtaining Medi-Cal to cover the cost of eligible services. Grant funds made available under this Agreement shall not be utilized to pay for services covered by Medi-Cal for individuals who qualify for Medi-Cal but do not apply. Similarly, patients who are eligible for private insurance must obtain that coverage, with co-pay support by SOR 4 funds allowed as needed, and co-pay coverage tracked within data collection requirements.

*\*See section 4.5.*

### 4.2 Eligible Grant Recipients

To be eligible for funding, an applicant organization must meet all the following criteria:

- Physically located in and able to provide evidence of delivering services in the state of California.
- Any provider or business authorized to operate in California is acceptable.
  - This includes Tribal authority, \* state, city, county, or local government entity, current nonprofit 501(c)(3), for-profit organization, and school-based program.

*\*Tribal Authority: (a) federally recognized Indian Tribes, tribal organizations, or Urban Indian organizations, or (b) health care programs operated by Indian Tribes, tribal organizations, or Urban Indian organizations, as defined in Section 1603 of Title 25 of the United States Code and further defined in Section 5304.*

Any entity listed with the System for Award Management as debarred or suspended is ineligible to receive YOR California funds. See <https://sam.gov/content/home> for the Exclude Parties List System.

### **4.3 Grant Monitoring and Participation in Training and Technical Assistance**

Grantees are expected to do the following:

- Identify a project lead, who will be the point of contact (staff examples include program manager, director, coordinator, project manager) to lead YOR California efforts. The point of contact is responsible for program implementation and outcomes, as well as reporting.
- Develop and maintain relationships with subcontractors, other partners, and a network of community-based youth service agencies.
- Establish and implement a youth/TAY/young adult advisory group and/or other best practices for integrating youth/TAY/young adult voices into program design, policy, and implementation.
- Participate in all YOR California Learning Collaboratives, in-person and virtual; office hours; TA activities, including webinars and coaching calls with grantee liaisons.
- Meet all federal and state funding restrictions, reporting, and compliance requirements as determined by SAMHSA and DHCS for use of SOR 4 funds. (See [California DHCS Opioid Response Project: Allowable Expenditures Requirements](#) for information on allowable costs.)
- Participate in any desk or site audits that may be conducted by YOR California, DHCS, or SAMHSA.

### **4.4 Inclusion of Evidence-Based Practices and Community-Defined Evidence Practices**

YOR funds are intended for the provision of services based on EBP and CDEPs that are appropriate for the population(s) of focus. \* See SAMHSA's [Evidence-Based Practices Resource Center](#) and the [Disparities in Behavioral Health \(NNED\)](#) to identify evidence-informed and culturally appropriate substance use prevention, treatment, and recovery practices that are project appropriate.

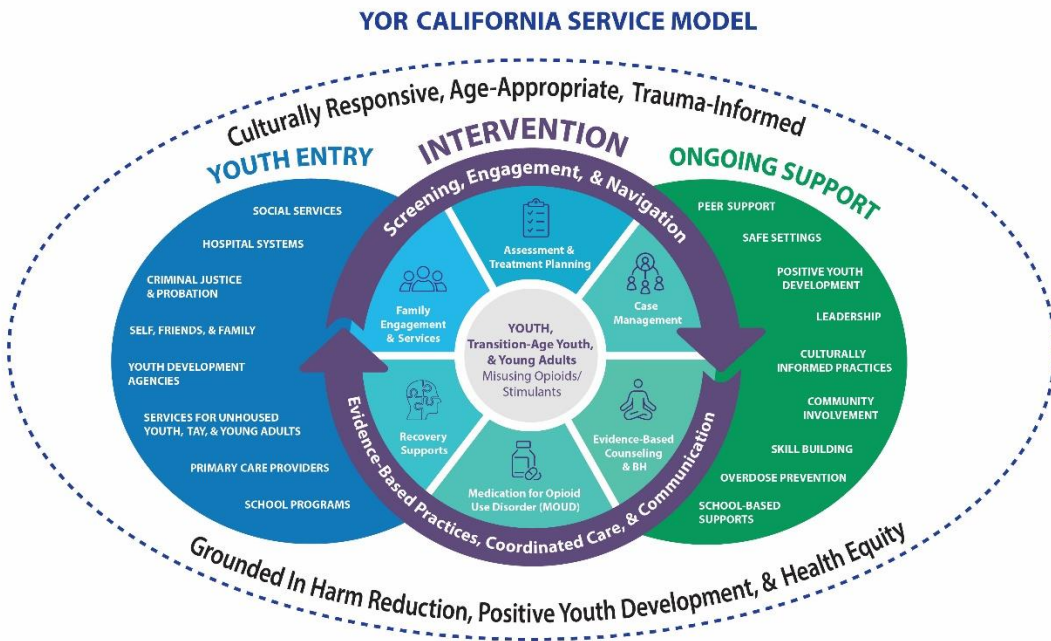
*\*An EBP is a practice that has been documented with research data to show its effectiveness. A culturally adapted practice refers to the systematic modification of an EBP that considers language, culture, and context in a way that is compatible with the clients' cultural patterns, meaning, and values.*

*\*CDEPs are practices that communities have shown to yield positive results as determined by community consensus over time, and which may or may not have been measured empirically but have reached a level of acceptance by the community.*

### **4.5 YOR California Service Model**

These services reflect an interconnected and coordinated network of care that is defined as culturally responsive, age- and developmentally appropriate, trauma-informed, and grounded in

positive youth development at every potential entry and intervention point, and throughout ongoing supports. Youth-relevant services are defined as those that address the unique experiences, interests, and motivations of TAY and young adults (ages 16–25) and must include support for families. Coordinated care and communications are essential components of this youth-centered model.



## 5. Data Reporting Requirements

YOR grantees are required to meet YOR California, DHCS, and other state and federal reporting, financial, and administrative requirements. Reporting requirements will include monthly, quarterly, and final reports. Grantees providing direct treatment and recovery services will be responsible for complying with Government Performance and Results Act (GPRA) data requirements (see below). All Grantees are required to submit project data directly to UCLA quarterly through the UCLA data portal.

Grantees will be responsible for submitting invoices, ensuring expenses are allowable, and retaining sufficient backup documentation on expenses. Grantees must ensure that adequate staffing is allocated and budgeted for these requirements.

### 5.1 GPRA Data Requirements

1. Organizations using funds from this contract for direct treatment and recovery services shall be required to complete and submit GPRA data. Organizations will work in partnership with DHCS's consultant, Aurrera Health Group, and the YOR California Team to ensure GPRA compliance.
2. Clients who receive medication, counseling, or recovery services with SOR 4 funding, or medical, counseling, peer support, or case management services from a provider whose salary is funded by the grant, must participate in the GPRA survey. GPRA surveys are conducted at intake, six months after the intake, and upon client discharge.



3. SOR 4 funding can be used to pay for GPRA incentives, with a maximum value of \$30. Incentives are typically gift cards and can include items such as food vouchers, transportation vouchers, or gas gift cards. GPRA incentives are only permitted for the six-month follow-up interview, and non-routine discharges (cases where program staff must search for a client who has left the program or a client who has dropped out of the program).
4. Organizations with GPRA requirements must have the capacity to meet required percentages of completion for all GPRA data collection:
  - a. For intakes: No less than 75 percent of eligible patients must be offered a GPRA baseline interview.
  - b. For six-month follow-ups: No less than 60 percent of patients who received a baseline interview must complete a six-month follow-up interview.
5. Organizations required to submit GPRA data must attend trainings offered by Aurrera Health Group:
  - a. All staff members tasked with completing GPRA with clients will be required to attend or view the initial GPRA training (GPRA 101) presentation from Aurrera Health Group.
  - b. All staff members tasked with completing GPRA with clients will additionally be required to attend one training and technical assistance (TTA) webinar related to GPRA annually, as provided by Aurrera Health Group. Additional training may be required.

For more information on GPRA reporting, see [GPRA Resources for SOR 4 Contractors](#).

All data and reporting requirements are subject to change in response to state or federal requirements.

## 6. Expenditures

SOR 4 awards for the YOR project are to be used only as funding of last resort, meaning that *it is permissible to use SOR 4 funds for services only when no other source of funding is available to deliver patient care*.

All awardees will be required to meet the [California DHCS Opioid Response Project: Allowable Expenditures Requirements](#) (Updated May 6, 2024).

Funds may not be used to make direct payments to individuals to enter treatment or continue participating in prevention or treatment services.

By applying for this funding, the applicant organization acknowledges and agrees that the maximum allowable indirect cost rate (ICR) shall be 15 percent (15%) of an organization's modified total direct costs (MTDC), as defined in 45 CFR Part 75 regardless of an organization's federally negotiated rate unless the applicant organization is a tribe or tribal entity which are permitted an exception to use their federally Negotiated Indirect Cost Rate (NICR) for the YOR SOR 4 grant program. DHCS has made this exception to the 15% ICR cap to allow tribes and tribal entities to better support their unique needs, promote equitable access, and encourage participation. Administration fees of a maximum of 5 percent (5%) are also allowable.



Expenses not listed as eligible on the link provided are not eligible. If you have a question about a particular expense, contact the YOR team through the email provided.

This is a cost-based reimbursement grant. \* Funds will not be provided in advance. Invoices are processed monthly.

*\*A cost-based reimbursement grant is a funding arrangement where the grantor reimburses the grantee for allowable, documented expenses incurred during the project. The grantee may be asked to submit receipts or financial reports.*

## 7. Sustainability Planning

All proposed YOR projects will be required to describe a sustainability plan in the YOR 4 application. The application includes questions about plans to continue the work after YOR funding has ended. Grantees will be asked what the organization has done to ensure the work continues in the future and how this grant will enhance work already completed.

Intentional, structured sustainability planning, with an eye toward reducing reliance on YOR funding, will include the following elements:

- All grantees will be required to complete the Program Sustainability Assessment Tool (PSAT) and/or Clinical Sustainability Assessment Tool (CSAT) (for clinical programs) at the beginning and end of the grant period. The Program Sustainability Assessment Tool (PSAT), developed by The Center for Public Health Systems Science, is a validated tool that assesses an organization's sustainability capacity across eight domains: Environmental Support, Funding Stability, Partnerships, Organizational Capacity, Program Evaluation, Communications, Strategic Planning, and Adaptability. The PSAT ensures intentional, structured sustainability planning, supporting DHCS's objective of reducing reliance on SOR 4 funding.
- Program sustainability updates will be required in quarterly progress reports.

## 8. Health Equity

Health equity is when everyone has a fair and just opportunity to attain their optimal health. YOR California seeks to address systematic differences in health status and health outcomes for marginalized populations and identify key barriers preventing populations of focus from achieving their optimal health. The following resources must be utilized when addressing Health Equity in the YOR application:

- Screening for and include a Social Determinants of Health (SDOH) framework in services. Explain how you build resiliency.
- Advance health equity and utilization of medication interventions to treat SUD for populations disproportionately impacted, such as Native American, Black, Latino, Asian, and Pacific Islander youth, TAY, and young adults ages 16–25.
- Expand capacity, outreach, and access to the constellation of MOUD and other elements of the YOR California Service Model.
- Bolster protective factors utilizing resources such as the U.S. Department of Health and Human Services' (HHS) Positive Youth Development frameworks to mitigate the impacts of adverse childhood experiences and other risk factors.

## 9. Application Process, Rules, and Requirements

### IMPORTANT DATES

- Informational Webinar: February 4, 2025: 12:00 p.m.- 1:30 p.m. PT
- Questions Deadline: February, 11, 2025
- Application Deadline: March 13, 2025: 4:00 p.m. PT
- Projected Award Notice: April 2025
- Performance Period: May 1, 2025 – September 29, 2027

\*At the YOR California team's discretion, these dates are subject to change to best meet program needs and further requirements.

- **The application deadline is 4 p.m. PT on Thursday, March 13, 2025.** Applications must be submitted through SurveyMonkey Apply (SMA) before that date and time. Applications received after that time will not be accepted for further consideration in this process.
- The required application attachments must be uploaded as separate files accompanying the application. Each attachment must be clearly titled with the name of the application element to which it applies.
- **An informational webinar will be held via Zoom at 12:00 p.m. PT on Tuesday, February 4, 2025.** Register [Here](#). The webinar will answer questions about the services requested and the application process. The session will be recorded, and responses to applicant questions will be issued as an FAQ addendum to this RFA. YOR California staff or consultants will not provide any private consultation with applicants regarding the RFA.
- YOR California assumes no responsibility for any understandings or representations concerning the terms and conditions of this RFA process made by staff, consultants, or others unless explicitly stated in this RFA provided as a written addendum to this RFA.
- YOR California makes no assurances regarding the minimum or maximum amount of funding for any contract awarded under this RFA process.
- This RFA does not commit YOR California to pay any costs incurred in the preparation of an application in response to this request. The bidder agrees that all costs incurred in developing this application are the bidder's responsibility.
- This RFA does not commit YOR California to award a contract. YOR California reserves the right to accept or reject any or all applications, or any part(s) of any or all applications.
- Submission of an application shall constitute acknowledgement and acceptance of all the terms and conditions contained in this RFA, unless otherwise specified in the application.

### 9.1 Online Application

The entire YOR application is contained in an online fillable form on the SMA platform. Use the application link to access the online application.

## Required Documents

### 9.2 Budget

The budget template that accompanies the application (Attachment 1) must be completed and uploaded in Section 7 of the application. All tabs must be completed to qualify for grant funding.

### 9.3 Implementation Plan

Complete the implementation plan in the application.

### 9.4 Additional Required Documents

The application requires you to upload the following additional documents:

- Resumes of program manager and other key staff (limit three pages)
- Organizational Chart
- Audited Financial Statement
- \*Tribal Organizations Only — Justification of indirect costs in excess of 15 percent (15%)
- Letters of Support from community partners

\* By applying for these funds all other organizations agree to the maximum 15 percent (15%) ICR.

You will receive an email *confirming receipt of your application* within 24 hours of submission.

Costs associated with the preparation or submission of application in response to this RFA or with award negotiation are not reimbursable.

### Additional Required Documents Checklist

<input type="checkbox"/>	Completed Budget Template
<input type="checkbox"/>	Resumes of program manager and other key staff (limit three pages)
<input type="checkbox"/>	Organizational Chart
<input type="checkbox"/>	Audited Financial Statement
<input type="checkbox"/>	*Tribal Organizations Only — Justification of indirect costs in excess of 15 percent (15%)
<input type="checkbox"/>	Letters of Support from community partners

\* By applying for these funds all other organizations agree to the maximum 15 percent (15%) ICR.

## 10. Post-Award Contract Negotiation and Management

Once selections have been made, the provider(s) chosen will be contacted to negotiate a service agreement. These negotiations may involve adjustments to the budget and/or to the nature or scope of work. Not all applicants will receive the total amount requested. YOR California reserves the right to make final determinations about award size, including whether to award full or partial coverage of the applicant's proposed expenses.

YOR California may require the potential bidders selected to participate in negotiations and submit revisions to the budget, technical information, and/or other elements of their applications as a result of negotiations. The contents of the successful bidder's application will become

contractual obligations, subject to negotiation. Failure to accept these obligations in a contract may result in award cancellation.

Applicant agencies awarded contracts will be required to present any Memorandum of Understanding with partners and contracts with subcontractors.

Applicant agencies awarded contracts will be required to record and submit data on client characteristics and services provided through an online portal. YOR California will monitor contractors to ensure compliance with the award terms and state and federal program standards. Contractors will be required to provide YOR California with any additional data needed to satisfy federal or state reporting requirements.

Successful applicants are expected to comply with all contract requirements. These include, but are not limited to, provisions regarding insurance and indemnification, HIPAA mandates, and fiscal requirements. Nothing in this RFA and its associated documents shall be construed as committing YOR California to issue an award. Any funds allocated after the RFA are subject to funding received from DHCS. YOR California may seek clarifications or recommend adjustments to applications or budgets as a condition of the award.

There is no appeal process. Modification of contract terms and conditions will be considered only under exceptional circumstances.

## 11. Applicant Scoring Criteria

Each application will be reviewed for technical compliance, completeness, and budget reasonableness. The contents will be scored, and applications will be ranked. Successful applicants presenting the most complete and responsive applications, demonstrating the most favorable mix of credentials, capacity, and potential to best meet YOR California’s needs and goals, will be selected. In addition to the application score, additional factors (such as the specific population served and geographic diversity) may also be considered to select the most favorable mix of grantees across the state. Decisions are at the sole discretion of YOR California and subject to DHCS approval. YOR California may conduct interviews to clarify the content of the application.

Section 1: Overview		Not Scored
<b>1. Applicant Organization &amp; Proposed Project Information</b> <b>2. Lead Agency Contact Information</b> <b>3. Lead Agency Point of Contact</b>		
Questions 1–3 are required and must be completed for an application to be considered for grant funding. Organization must be authorized to do business in California to be eligible for funding.		
<b>4. Provision of Direct Services</b>		
Is a provider organization for direct client services involved in the project? Services: mental health/SUD prevention, treatment, and recovery supports.	<input type="checkbox"/> Yes <input type="checkbox"/> No The provider can be a subcontractor or partner. If “No” the organization is ineligible to apply for these funds.	

<p>Does each provider organization involved have at least two years of experience providing relevant services as of application due date?</p>	<p><input type="checkbox"/> Yes <input type="checkbox"/> No</p> <p>The provider can be a subcontractor or partner.</p> <p>If “No” the organization is ineligible to apply for these funds.</p>
<p><b>5. Brief Abstract of Proposed Project</b> (Limit 350 words)</p> <p>Applicant provides a detailed description of the organization’s proposed project.</p>	
<p><b>6. Previous YOR Grantee?</b></p> <p>If “Yes” please include Section 8: Previous YOR CA Grantees Only — Supplemental Questions in the application.</p>	
<p><b>Section 2: Catchment Area and Population of Focus for Proposed Project</b> <span style="float: right;"><b>Up to 8 points</b></span></p>	
<p><b>1. Geographic Reach and Service Area</b></p> <p>Description incorporating credible data sources.</p>	
<p><b>2. Age Group(s)</b></p> <p>Specifically, for whom the organization is prepared to customize outreach and services.</p>	
<p><b>3. Population of Focus and Community Need</b> (Limit 350 words)</p> <p>Description and supportive data for population intended to be served by YOR CA project (age, culture, protective and risk factors, language, health inequities, community assets, and service gaps).</p>	
<p><b>Section 3: Qualifications</b> <span style="float: right;"><b>Up to 32 points</b></span></p>	
<p><b>1. Organization Description</b> (Limit 350 words)</p> <p>a. History b. Mission c. Vision d. Size e. Infrastructure f. Grant management capacity g. YOR activities alignment</p>	
<p><b>2. Experience Serving Population of Focus</b> (Limit 350 words)</p> <p>Description and example of programs and services provided, including outreach, harm reduction, StUD/MOUD treatment to youth, TAY, and young adults. Applicants must have a minimum of two years’ experience.</p>	
<p><b>3. Cultural Responsiveness and Linguistic Appropriateness</b> (Limit 350 words)</p> <p>Description and example of languages available and culturally responsive practices.</p>	
<p><b>4. Trauma-Informed, Strengths-Based, and Evidence-Based Approach</b> (Limit 350 words)</p> <p>Description and example of current or planned trauma-informed, strengths-based, and EBPs.</p>	

<b>5. Current Programming and Services</b>	
Table of questions about services and programs, MOUD and other medication, youth advisory groups, and Medi-Cal enrollment.	
<b>6. Current Demographics: Youth, TAY, and Young Adults engaged and/or served by organization in FY 2023–2024</b>	
<b>7. Organization Partnerships</b>	
Details about community partners and subcontractors, provision of direct services, and collaboration.	
<b>8. Organization Staffing</b>	(Limit 350 words)
Details of staff qualifications for working with the population of focus, including training, licensure, and linguistic and cultural capabilities.	
<b>Section 4: Project Implementation</b>	<b>Up to 10 points</b>
<b>1. Project Implementation Description</b>	
Details of goals and objectives for treatment, outreach, and engagement including services, settings, involvement of peers with lived experience, family involvement, impact, and Medi-Cal/insurance enrollment. Description must align with the submitted Project Implementation Plan in the online application.	
<b>2. Detailed Project Implementation Plan</b>	
The Project Implementation Plan must be complete for an application to be considered for grant funding. Sample template provided in application worksheet.	
<b>Section 5: Management Plan and Sustainability</b>	<b>Up to 30 points</b>
<b>1. Organization Staffing, Workforce Recruitment, and Retention</b>	(Limit 350 words)
Description of current staff and planned recruitment to support implementation of YOR CA project.	
<b>2. Organization Structure</b>	
Required document illustrating how YOR CA fits within the lead agency and relates to other programs, partners, subcontractors, and youth advisory group.	
<b>3. Commitment to Project</b>	(Limit 350 words)
Overview of organization’s leadership involvement in the project.	
<b>4. Quality Assurance, Measurement, and Compliance</b>	(Limit 350 words)
Description of ability to meet YOR California, state, and federal financial, data, and compliance requirements. Include data collection and QA processes.	
<b>5. Financial Management</b>	(Limit 350 words)
Details on use of YOR CA funding as a last option for treatment and recovery services, insurance/Medi-Cal, and other funding.	
<b>6. Sustainability</b>	(Limit 350 words)
Description of plans to ensure the project continues post-YOR funding.	

**Section 6: Budget****Up to 10 points**

To be considered for funding, the budget template accompanying the application (Attachment 1) must be completed and uploaded in Section 7 of the application. Applicants must complete all tabs. The sample budget template below is meant to inform only. **This is NOT the actual Budget template.**

**SAMPLE Budget Template****A. Budget Summary**

Personnel – Administrative &amp; Support Staff

Personnel – Service Provider Staff

Services &amp; Supplies

Total Direct Costs

Indirect Costs – 15% maximum allowable ICR with the exception of tribal entities. (See RFA section 6. Expenditures)

**Total Proposed Budget****B. Personnel Costs – Administrative & Support Staff**

Include titles, FTE, and hourly rates for each position

Include total for benefits and Taxes

**C. Personnel Costs – Direct Services Staff**

Include titles, FTE, and hourly rates for each position

Include total for benefits and Taxes

**D. Services & Supplies**

Expenses by category (Training, travel, equipment)

Subcontractors – Business Entities (List by function.)

Subcontractors – Self-Employed Individuals (List by function.)

**Budget Narrative**

Explanation for expenses by categories listed above.

**Section 7: Additional Required Documents****Up to 10 points**

The following required documents must be complete for an application to be considered for grant funding.

- Completed Budget Template
- Resumes of program manager and other key staff (limit three pages)
- Organizational Chart
- Audited Financial Statement
- \*Tribal Organizations Only — Justification of indirect costs in excess of 15 percent (15%)
- Letters of Support from community partners

\* By applying for these funds all other organizations agree to the maximum 15 percent (15%) ICR.

**Supplemental Questions: Previous YOR CA Grantees Only****Not Scored**

Previous YOR grantees applying for YOR 4 funding must respond to the questions below.

- 1. Prior YOR CA Year**
- 2. Prior YOR CA Grantee Type**
- 3. Prior YOR CA Grant Funding**

Details on DHCS award amounts, and spend-down totals for all prior YOR CA rounds applicable.



<b>4. Demonstrated Strong Past Performance in Meeting Grant Goals</b>	(Limit 350 words)
Description including examples of positive outcomes, challenges overcome, and measurable impacts.	
<b>5. Lessons Learned from Past Funding</b>	(Limit 350 words)
Description of lessons and resulting insights regarding shaping the approach to this application.	
<b>6. Sustainability</b>	(Limit 350 words)
Description and example of how YOR funds currently assist the organization and steps taken to reduce reliance on YOR funding by the end of YOR 4.	

## 12. YOR California Round 4 Application Worksheet

THIS IS A WORKSHEET, NOT THE ACTUAL APPLICATION. This is a **copy** of the application form for your use in planning your RFA submission. The formal application must be completed [online](#) as described in the RFA. If you have questions, please email [YORCalifornia@ahpnet.com](mailto:YORCalifornia@ahpnet.com).

Please note that applicants must submit one complete application for *each* location for which the organization is requesting YOR 4 funding.

### Section 1: Overview

1. Applicant Organization & Proposed Project Information	
Lead Agency Name	
Project Name	
Agency Address	
Website Address (optional)	
County(ies) Served	
Organization Type	<input type="checkbox"/> Tribal <input type="checkbox"/> County <input type="checkbox"/> Nonprofit <input type="checkbox"/> Other  If nonprofit, provide incorporation date and state where incorporated.
Federal Tax ID	
Federal Unique Entity ID	
Is the organization authorized to do business in California?	<input type="checkbox"/> Yes <input type="checkbox"/> No  If "No" the organization is ineligible to apply for these funds.
Total Budget Request (Budget cannot exceed \$750,000)	
2. Lead Agency Contact Information	
Name (First and Last)	
Title	
Mailing Address (if different from Agency Address)	
Email Address	
Telephone Number	
3. Lead Agency Point of Contact	
Name (First and Last)	
Title	
Mailing Address (if different from Agency Address)	
Email Address	
Telephone Number	

<b>4. Provision of Direct Services</b>	
Is a provider organization for direct client services involved in the project? Services: mental health/SUD prevention, treatment, and recovery supports.	<input type="checkbox"/> Yes <input type="checkbox"/> No The provider can be the applicant and/or a subcontractor or partner. If "No" the organization is ineligible to apply for these funds.
Does each provider organization involved have at least two years of experience providing relevant services as of application due date?	<input type="checkbox"/> Yes <input type="checkbox"/> No If "No" the organization is ineligible to apply for these funds.
<b>5. Brief Abstract of Proposed Project</b> (Limit 350 words)	
<b>6. Previous YOR Grantee?</b>	
<input type="checkbox"/> Yes <input type="checkbox"/> No	If "Yes" please complete <b>Supplemental Questions: Previous YOR CA Grantees Only</b> — in the application.

## Section 2: Catchment Area and Population of Focus for Proposed Project

<b>1. Geographic Reach and Service Area</b> (Limit 350 words)	
Briefly describe important characteristics of the service area including the cities and county/counties served through the project using credible data sources. (Local or regional public health data, [i.e., the California Healthy Places Index])	
<b>2. Age Group(s)</b>	
Select the age range(s) for whom the organization is prepared to customize outreach and services.	<input type="checkbox"/> 16– 17 years old <input type="checkbox"/> 18–20 years old <input type="checkbox"/> 21–25 years old
<b>3. Population of Focus and Community Need</b> (Limit 350 words)	
Describe the focus population (and any subpopulations) that the YOR California project will serve, including age, culture, protective and risk factors, language, health inequities, community assets and service gaps affecting the population of focus. Provide data to support understanding including racial/cultural considerations.	

## Section 3: Qualifications

<b>1. Organization Description</b> (Limit 350 words)	
Provide a detailed description of the organization, including history, mission, vision, size, infrastructure, and grant management capacity, and describe how YOR activities align. Provide an example.	
<b>2. Experience Serving Population of Focus</b> (Limit 350 words)	
What programs and services are provided to the population of focus? Include SUD and MOUD treatment services, harm reduction, outreach activities, and experience expanding low barrier treatment access for youth, TAY, and young adults with OUD/StUD, and/or who are at risk of	

<p>misusing illicit substances and counterfeit pharmaceuticals often mixed with fentanyl. Provide an example. Minimum applicant experience: Two years.</p>	
<p><b>3. Cultural Responsiveness and Linguistic Appropriateness</b> (Limit 350 words)</p>	
<p>How does the organization provide culturally responsive and linguistically appropriate services? What languages are available at the site(s)? Provide an example.</p>	
<p><b>4. Trauma-Informed, Strengths-Based, and Evidence-Based Approach</b> (Limit 350 words)</p>	
<p>Describe the organization’s approach to trauma-informed, strengths-based, and EBPs. Indicate whether these models are currently implemented or part of a future plan. Provide an example.</p>	
<p><b>5. Current Programming and Services</b></p>	
a. Number of years agency has been providing OUD/StUDs services for youth, TAY, and young adults (ages 16–25).	
b. Number of years agency has been providing positive youth development programming and/or recovery supports and/or expanding low barrier treatment access for youth, TAY, and young adults (ages 16–25) with OUD/StUD, and/or who are at risk of misusing illicit substances and counterfeit pharmaceuticals often mixed with fentanyl.	
c. Does the organization currently provide MOUD for youth, TAY, and young adults (ages 16-25)?	<input type="checkbox"/> Yes <input type="checkbox"/> No
d. If “Yes” Which of the following medications are made available? Check all that apply.	<input type="checkbox"/> Methadone <input type="checkbox"/> Buprenorphine <input type="checkbox"/> Naltrexone
e. Does the organization currently provide medication for other OUD/StUD treatment services for youth, TAY, and young adults (ages 16-25)?	<input type="checkbox"/> Yes <input type="checkbox"/> No
f. Does the organization host or partner with a youth advisory group to inform programs?	<input type="checkbox"/> Yes <input type="checkbox"/> No
g. Does the organization have policies and procedures in place regarding timely patient enrollment in Medi-Cal or other insurance programming, if applicable? — If yes, the organization will be required to produce these documents upon grant award. If not, plans to introduce this service must be included in the implementation plan. <b>(Section 4)</b> .	<input type="checkbox"/> Yes <input type="checkbox"/> No
<p><b>6. Current Demographics: Youth, TAY, and Young Adults Engaged and/or Served by Organization in FY 2023–2024</b></p>	
a. <b>Total number of youth, TAY, and young adults served.</b>	
b. <b>Gender</b>	<b>Number Represented</b>
Male	
Female	
Nonbinary, Genderqueer	
Other	
Unknown	
c. <b>Race</b>	<b>Number Represented</b>

White	
Black/African American	
Hispanic/Latino/a/x	
Asian American/Pacific Islander (AA/PI)	
American Indian/Alaska Native (AI/AN)	
Multiracial	
Other	
Unknown	
d. Additional populations of focus	
With physical or mental disabilities	
Misusing opioids/stimulants or with OUD/StUD	
At high risk of opioid overdose	
Other: Please specify	
e. If the organization serves other age groups, what percent of the total served are youth, TAY, and young adults?	
f. Projected number of unduplicated youth, TAY, and young adults (ages 16–25) who will receive services as a result of this project.	

7. Organization Partnerships		
a. In the table below, list the organization’s community partners and subcontractors, their role in the project, and what their contribution will be to the project. Specify all subcontractors and key partners by name. <b>Official MOUs and/or subcontracts are required during contracting.</b>		
<b>Community Partners</b>		
Business Name	Role and Contribution	Current MOU in place? Not required for application but will be required for contracting.
1.		<input type="checkbox"/> Yes <input type="checkbox"/> No
2.		<input type="checkbox"/> Yes <input type="checkbox"/> No
3.		<input type="checkbox"/> Yes <input type="checkbox"/> No
<b>Subcontractors</b>		
Business Name	Role and Contribution	Current MOU in place?

1.			<input type="checkbox"/> Yes <input type="checkbox"/> No
2.			<input type="checkbox"/> Yes <input type="checkbox"/> No
3.			<input type="checkbox"/> Yes <input type="checkbox"/> No
b. How does the organization intend to supply direct service or a pathway to direct service? How does the organization intend to further collaborate with these partners? Please share the steps that will be taken.			(Limit 350 words)
<b>8. Organization Staffing</b> (Limit 350 words)			
Describe the organization's staffing plan and staff qualifications for the proposed YOR CA project. What makes the individuals uniquely qualified (training, licensure, experience, etc.) to work with the focus population? Discuss the linguistic and cultural capability of the staff as it relates to the focus population. Be specific.			

## Section 4: Project Implementation

<b>1. Project Implementation Description</b> (Limit 350 words)	
Tell us how the project will expand low barrier treatment access and reach, and engage youth, TAY, and young adults with OUD/StUD, and/or those at risk of misusing illicit substances and counterfeit pharmaceuticals often mixed with fentanyl.	
Describe:	
<ul style="list-style-type: none"> <li>▪ Specific services that will be offered.</li> <li>▪ The types of settings used to reach and serve the focus population.</li> <li>▪ How youth, TAY, and young adults with lived experience will be included in planning and implementation.</li> <li>▪ How families will be involved.</li> <li>▪ What lasting impact the organization hopes to achieve with this project.</li> <li>▪ Policies and procedures in place to provide timely patient enrollment in Medi-Cal or other insurance programming, if applicable.</li> <li>▪ If yes, the organization will be required to produce these documents upon grant award. If not, the organization should include this in the implementation plan.</li> </ul>	
<b>2. Detailed Project Implementation Plan</b>	
Provide a detailed Project Implementation Plan reflecting the goals and objectives identified and outlined in the Project Implementation Description. The online Project Implementation Plan template must be complete for an application to be considered for grant funding.	
Is the Project Implementation Plan complete?	<input type="checkbox"/> Yes <input type="checkbox"/> No
<b>Sample Implementation Plan Template</b>	
The fields below are meant to provide an overview of the information required in the online Project Implementation Plan.	

<b>Purpose Statement:</b> Two to three sentences that include a summary of the scope and purpose of work planned.
<b>Goals and Activities:</b> Identify a goal for each funding period (Y1 April 2025-June 2025, Y2 July 2025-June 2026, Y3 July 2026-June 2027). Goals should be: <ul style="list-style-type: none"> <li>• Specific – Clearly states the objective.</li> <li>• Measurable – Progress can be tracked and evaluated.</li> <li>• Achievable – Goal is realistic.</li> <li>• Relevant – Connects to long-term strategy and other goals.</li> <li>• Time-bound – Has beginning and ending dates.</li> </ul>
<b>Example Goal:</b> “By July 2025, organization X will provide SUD navigation services to 100 youth (ages 16-17) at risk of experiencing an opioid overdose.
<b>Example Activities:</b> Set up walk-in time for youth drop-in center      December 2024 Identify youth peer navigators                              March 2025 Identify youth resources in the community      March 2025
<b>Data Deliverables:</b> Identify data targets for Years 1, 2, and 3, and the grant period total. If the grant does not cover certain services, put a zero in the corresponding column.

	Year 1	Year 2	Year 3	Grant Period Total
Number of unduplicated youth contacts				
Number of unduplicated TAY contacts				
Number of unduplicated young adult contacts				
Number of ongoing clients				
<b>Outreach, Education and Community Engagement</b>				
Number of encounters				
Number of events				
<b>SUD Engagement, Screening, Navigation and Referral</b>				
Youth Contacts - Number of potential client encounters				
Youth Screened - Number of clients				
Navigation Services - Number of clients				
Navigation Services - Number of encounters				
<b>Harm Reduction and Early Intervention</b>				
Drop-In Center - Number of clients				
Other Structured Early Intervention Services - Number of clients				
<b>Services for Youth Using Opioids/Stimulants</b>				
Case Management - Number of clients				
Evaluation and Referral for MOUD - Number of encounters				
MOUD Services (Buprenorphine, Methadone, Naltrexone) - Number of Clients				
BH EBP interventions (MH & SUD Counseling) - Number of encounters				
Recovery Support - Number of clients				
<b>Supplemental Data</b>				
Number of Narcan kits distributed				
Number of fentanyl test strips distributed				



Number of xylazine test strips Distributed				
--	--	--	--	--

## Section 5: Management Plan and Sustainability

<b>1. Organization Staffing, Workforce Recruitment, and Retention</b> (Limit 350 words)
Detail the organization’s current or planned workforce recruitment and retention. How does this support the implementation of this project?
<b>2. Organization Structure</b>
Create an Organizational Chart(s) illustrating how YOR California fits within the lead agency and relates to other lead agency programs. Include the relationships to subcontractors/other key partner agencies, other stakeholders, and the youth advisory group. See <b>Section 7: Additional Required Documents</b> to upload the chart.
<b>3. Commitment to Project</b> (Limit 350 words)
Describe the organization’s leadership involvement and commitment to this project plan.
<b>4. Quality Assurance, Measurement, and Compliance</b> (Limit 350 words)
Describe the organization’s ability to meet YOR California, state, and federal financial, data, and compliance requirements. How does the organization maintain quality assurance? What is the process for timely and consistent GPRA and UCLA data collection?
<b>5. Financial Management</b> (Limit 350 words)
How will the lead agency monitor and ensure that YOR California funds are only used for treatment and recovery services when no other funding exists? Please include the following: <ul style="list-style-type: none"> <li>▪ How will the organization access and leverage resources, including Medi-Cal, commercial health insurance, and in-kind services?</li> <li>▪ If the organization accepts Medi-Cal for relevant services, what services are covered by Medi-Cal?</li> <li>▪ How will the organization assist the focus population with enrolling in Medi-Cal?</li> <li>▪ Will the organization receive other funding?</li> <li>▪ Are YOR funds the primary funding source for the proposed project?</li> </ul>
<b>6. Sustainability</b> (Limit 350 words)
Describe the organization’s long-term sustainability plan. Describe plans to continue the work after YOR funding has ended.

## Section 6: Budget

**The accompanying Budget template (Attachment 1) must be uploaded in Section 7 to be considered for grant funding. Applicants must complete all tabs.**

**Total amount requested:**

\* By applying for these funds all organizations other than Tribal Entities agree to the maximum 15 percent (15%) ICR.

## Section 7: Additional Required Documents

The following required documents must be provided for an application to be considered for grant funding.

- Completed Budget Template
- Resumes of program manager and other key staff (limit three pages per title – Max 5 key project staff)
- Organizational Chart
- Audited Financial Statement
- \*Tribal Organizations Only — Justification of indirect costs in excess of 15 percent (15%) percent
- Letters of Support from community partners

\* By applying for these funds all other organizations agree to the maximum 15 percent (15%) ICR.

## Supplemental Questions: Previous YOR California Grantees Only

Previous YOR grantees applying for YOR 4 funding must respond to the questions below.		
<b>1. Prior YOR CA Year (Select all that apply.)</b>		
<input type="checkbox"/> YOR 1 Grantee	<input type="checkbox"/> YOR 2 Grantee	<input type="checkbox"/> YOR 3 Grantee
<b>2. Prior YOR CA Grantee Type (Select all that apply.)</b>		
<input type="checkbox"/> Implementation	<input type="checkbox"/> Capacity Building Only	<input type="checkbox"/> Both
<b>3. Prior YOR CA Grant Funding</b>		
Provide amount(s) awarded and spent out for each previous grant period.		
Grant Period	Grant Funding Amount Awarded by DHCS	Total Amount of Grant Funding Spent
<input type="checkbox"/> YOR 1 Grantee <input type="checkbox"/> YOR 2 Grantee <input type="checkbox"/> YOR 3 Grantee		
<input type="checkbox"/> YOR 1 Grantee <input type="checkbox"/> YOR 2 Grantee <input type="checkbox"/> YOR 3 Grantee		
<input type="checkbox"/> YOR 1 Grantee <input type="checkbox"/> YOR 2 Grantee <input type="checkbox"/> YOR 3 Grantee		
<b>4. Demonstrated Strong Past Performance in Meeting Grant Goals (Limit 350 words)</b>		
Describe how the organization met or exceeded the goals set in previous YOR grant(s). Please include specific examples of outcomes achieved, challenges overcome, and any measurable impacts on the community served.		
<b>5. Lessons Learned from Past Funding (Limit 350 words)</b>		

Reflecting on previous YOR grant experience, what key lessons did the organization learn?  
How have these insights shaped the approach to this application?

**6. Sustainability**

(Limit 350 words)

How are YOR funds currently assisting the organization, and what steps will be taken to ensure that funding is no longer relied upon by the end of YOR 4? Include any partnerships or organizational plans to strengthen services and reduce reliance on YOR funding.

**13. Attachment 1 — Budget Template**